



Karlsruhe Institute of Technology

KIT DEPARTMENT OF BUSINESS & ECONOMICS





Photoexpert - stock.adobe.com

INTERACTION OF BUSINESS AND TECHNOLOGY FOR A SUSTAINABLE FUTURE

Photo: Harry Marx

WELCOME

Interdisciplinarity and collaboration between institutes are integral practices at the KIT Department of Business & Economics. Together, we address global societal challenges at the intersection of business and technology, contributing to world-class solutions through our research.

In teaching, we leverage the potential of expertise in models, methods and practice. New interactive formats such as team projects and close cooperation with companies, ensure the best possible career prospects for our graduates. With around 3,600 students, we are one of the largest departments at KIT, with an active and engaged student body.

A major long-term success of our department is the exceptionally strong cooperation across disciplines within a single department, which contributes to the department's appeal as an exciting and productive research environment.

Increasing the internationalization of teaching is a key focus for our department. We are always looking for dedicated new colleagues like you and would be honored to incorporate your expertise into our ongoing cutting-edge research, actively shaping the digital transformation in its aspects of information technology, business, and society.



Photo: Amadeus Bramsiepe

Prof. Dr. Marc Wouters, Dean KIT Department of Business & Economics

CONTENT

- Where we are
- About KIT Department of Business & Economics
- Research at KIT Department of Economics & Management
- Study Programs at KIT Department of Business & Economics
- About KIT
- Our Partners
- Living and Working in Karlsruhe
- Job Description
- Impressions
- Further Information



WHERE WE ARE



Photo: Amadeus Bramsiepe



Photo: Riccardo Prevete



Photo: Amadeus Bramsiepe

Our department enjoys excellent research facilities at Kronenplatz, in the heart of Karlsruhe and KIT Campus South, at Campus B in Bluecherstrasse and KIT Campus West.

Karlsruhe is at the heart of one of the most successful economic, scientific and research regions in Europe and is one of the most important IT hubs in Germany with a vibrant start-up culture.

Find out more: www.wiwi.kit.edu/index.php

ABOUT KIT DEPARTMENT OF BUSINESS & ECONOMICS

We understand and shape the interaction of business and technology for the sustainable development of society and environment.

Research and teaching at the KIT Department of Business & Economics are characterized by an interdisciplinary approach to the current challenges in business and society.

Our Industrial Engineering & Management program has gained a remarkable reputation in research and industry as one of the largest and most successful programs of its kind. In addition, we offer a degree in Digital Economics, a degree in Information Systems in

cooperation with the KIT Department of Informatics, and a Master's degree in Business Mathematics in cooperation with the KIT Department of Mathematics.

~280
PhD students

50
Postdocs

~ 370
courses



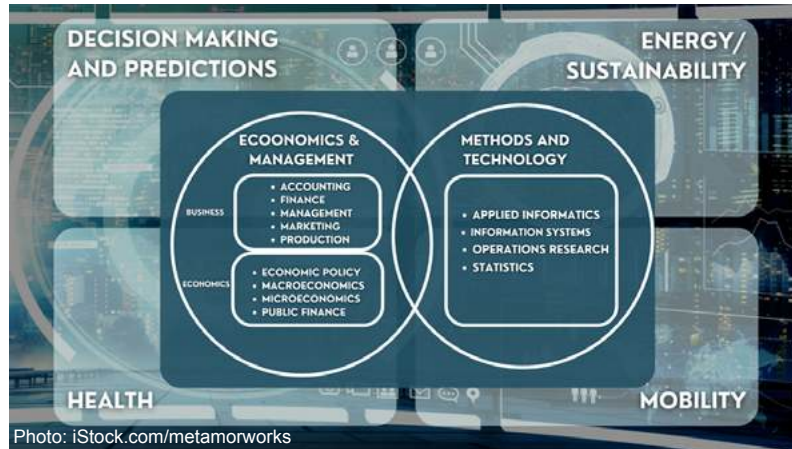
38
W3 professors
2
W1 TT professors

~ 3.440
students
with ~ 16% of
international
students

Find out more: www.wiwi.kit.edu/english/profile.php

RESEARCH FOCUS AT KIT-DEPARTMENT OF BUSINESS & ECONOMICS

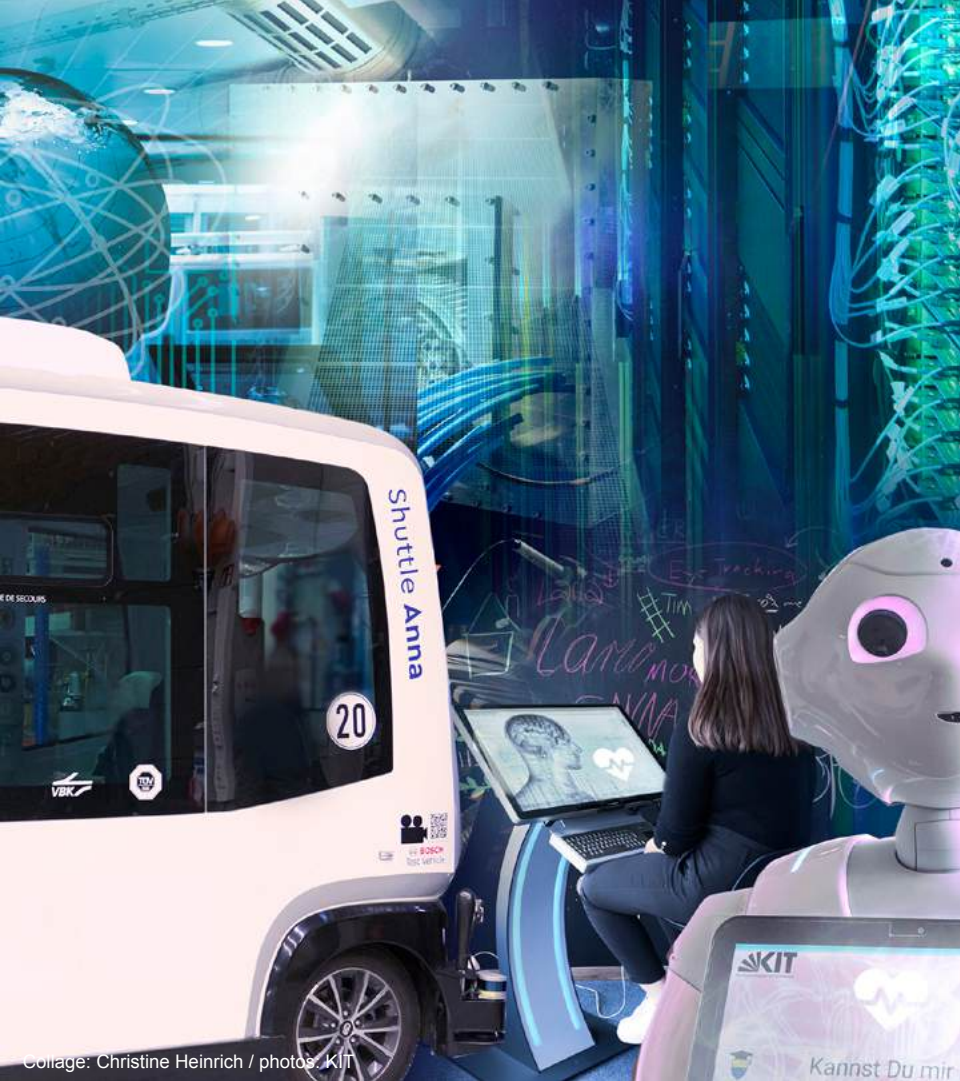
Economic issues at the intersection of methods and technology form the core of our main research fields. In this context, several research groups work on interdisciplinary questions.



Find out more: www.wiwi.kit.edu/forschungsprofil.php



Collage: Christine Heinrich/ photos: KIT



Our key topics of expertise cover sustainability/energy, public health, and mobility, particularly with regard to decision-making behavior and predictions across various disciplines. Other key infrastructures include the Test Area **Autonomous Driving** Baden-Württemberg and the research unit **Financial Markets and Frictions**.

As interdisciplinary work requires exchange, we closely collaborate with other organizations for transfer and research excellence as well as KIT departments and KIT Centers, e.g.:

■ Fraunhofer Institute for Systems and Innovation Research ISI

■ FIZ Karlsruhe – Leibniz Institute of Information Infrastructure

■ FZI Research Center for Information Technology

■ Hector School of Engineering and Management

■ HITS – Heidelberg Institute for Theoretical Studies

■ KSRI – Karlsruhe Digital Service Research & Innovation Hub

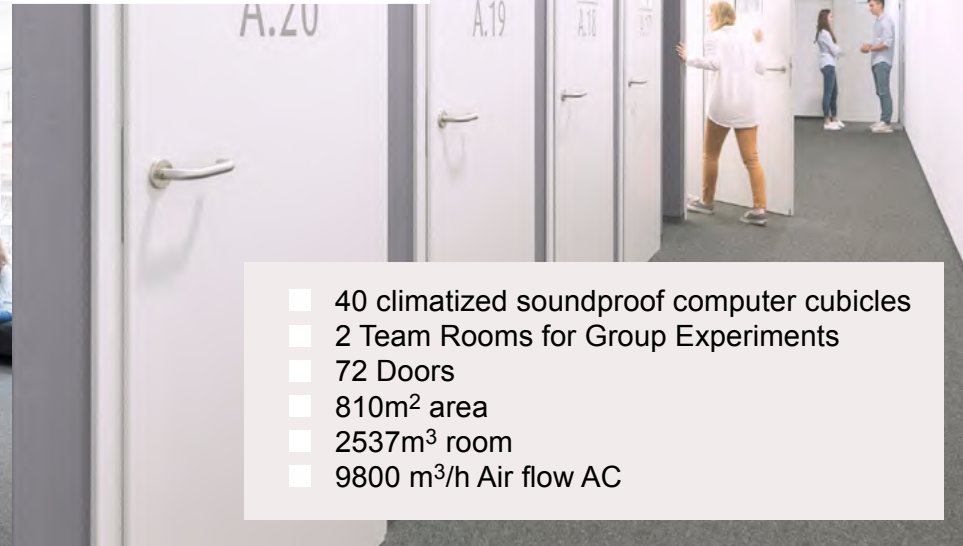
■ ZEW – Leibniz Centre for European Economic Research



Find out more: www.wiwi.kit.edu/english/research.php

KD²LAB

One of the leading experimental laboratories for neuro-physiological research (**KD²Lab**) is an important research infrastructure of our department. Additionally, the DFG-funded graduate school “**KD²School**” conducts intensive research at KD²Lab.



- 40 climatized soundproof computer cubicles
- 2 Team Rooms for Group Experiments
- 72 Doors
- 810m² area
- 2537m³ room
- 9800 m³/h Air flow AC

Photos: Markus Breig

Find out more: www.kd2lab.kit.edu

RESEARCH GROUPS AND INSTITUTES

Institute of Applied Informatics and Formal Description Methods

Prof. Dr. Sanja Lazarova-Molnar

Prof. Dr. Andreas Oberweis

Prof. Dr. Harald Sack

Prof. Dr. Alexey Vinel

Prof. Dr. Melanie Volkamer

Prof. Dr. J. Marius Zöllner

Institute for Operations Research

Jun.Prof. Emilia Grass

Prof. Dr. Oliver Grothe

Prof. Dr. Stefan Nickel

Prof. Dr. Steffen Rebennack

Prof. Dr. Oliver Stein

Institute of Entrepreneurship, Technology Management & Innovation

Prof. Dr. Orestis Terzidis

Univ.-Prof. Dr. Marion Weissenberger-Eibl

Institute for Finance



Prof. Dr. Martin Ruckes

Prof. Dr. Marliese Uhrig-Homburg

Prof. Dr. Maxim Ulrich

Prof. Dr. Julian Thimme

Institute for Information Systems

Prof. Dr. Alexander Mädche

Prof. Dr. Christof Weinhardt

Prof. Dr. Jella Pfeiffer

Institute for Customer Insights

Prof. Dr. Andras Geyer-Schulz

Prof. Dr. Martin Klarmann

Prof. Dr. Ann-Kristin Kupfer

Prof. Dr. Benjamin Scheibehenne

Institute for Industrial Production

Prof. Dr. Wolf Fichtner

Prof. Dr. Frank Schultmann

Institute of Economics



Prof. Dr. Johannes Brumm

Pro. Dr. Kay Mitusch

Prof. Dr. Ingrid Ott

Prof. Dr. Clemens Puppe

Prof. J. Philipp Reiss

Prof. Dr. Berthold U. Wigger

Institute of Statistics

TT.-Prof. Dr. Johannes Bracher

Prof. Dr. Fabian Krüger

Prof. Dr. Melanie Schienle

Prof. Dr. Tilmann Gneiting (in cooperation with KIT-Department of Mathematics)

Institute of Management

Prof. Dr. Hagen Lindstädt

Prof. Dr. Petra Nieken

Prof. Dr. Marc Wouters



STUDY PROGRAMS

At KIT Department of Business & Economics we offer the following Bachelor's and Master's Study Programs:

- **INDUSTRIAL ENGINEERING & MANAGEMENT** (B.Sc./M.Sc.)
- **INFORMATION SYSTEMS** (B.Sc./M.Sc.)
in cooperation with KIT Department of Informatics
- **DIGITAL ECONOMICS** (B.Sc./M.Sc.)
- **BUSINESS MATHEMATICS**
(M.Sc.) in cooperation with KIT Department of Mathematics
- **DOUBLE DEGREE PROGRAM:** Master's in Industrial Engineering
in cooperation with INP Grenoble - Génie Industriel, UGA

Additionally, we offer part-time Master of Science Programs in cooperation with HECTOR School – the Technology Business School of the KIT: <https://www.hectorschool.kit.edu/index.php>

Find out more: www.wiwi.kit.edu/english/studienProg.php

We prepare our students for their professional career by cooperating closely with companies such as IBM, Porsche, and SAP in the context of our company partner network. Our teaching is practice-oriented, featuring lectures by experts and working on practical case studies.

Our graduates value the program's flexible curriculum and broad course offerings. They especially appreciate the emphasis on interdisciplinary thinking, taking initiative, applying knowledge to new challenges, and developing strong analytical skills throughout their studies.

With approximately 70 partner universities across Europe, students have extensive opportunities to gain international experience as part of their academic development. Moreover, entrepreneurship is firmly embedded within the department through the Institute of Entrepreneurship, Technology Management & Innovation (EnTechnon), which provides a comprehensive range of courses focused on entrepreneurial theory and practice.





ABOUT KARLSRUHE INSTITUTE OF TECHNOLOGY (KIT)

Unique together: KIT is the only German University of Excellence with a national large-scale research sector. It unites the strengths of a traditional university with those of program-oriented research, making KIT distinctive both in its organizational model and the breadth of its academic disciplines.

At KIT, researchers collaborate across 11 departments, spanning the natural and engineering sciences, economics, the humanities, and social sciences. This interdisciplinary environment supports research-based academic programs that prepare students for leadership roles in society, industry, and academia.

KIT achieves excellent innovation successes and offers students interested in entrepreneurship specific opportunities, such as the KIT Gruenderschmiede.

Find out more: www.kit.edu/kit/english/index.php

KIT FACTS AND FIGURES 2024

5 Campuses – 200 ha area

22,816 Students

414 Professors

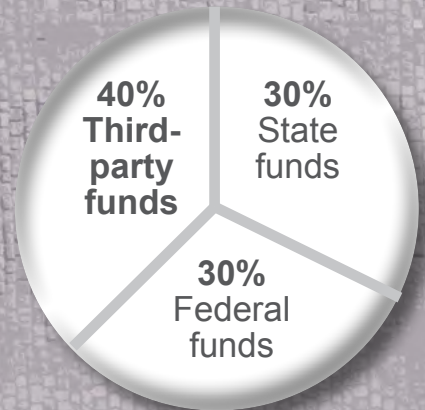
10,034 Employees

95 Invention Disclosure

58 Spinoffs and Startups

48 Patent Applications

KIT budget 2024
EUR 1225,2 million



Collage: Christine Heinrich / photos: KIT

Find out more: www.kit.edu/kit/english/data.php



RESEARCH

Photo: Andrea Eapen



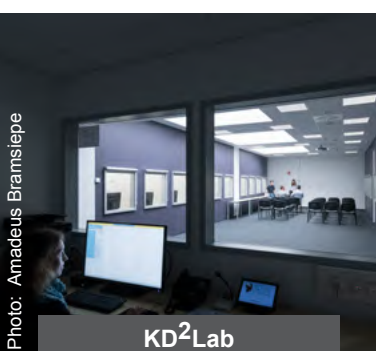
GLOBAL LEARNING FACTORY

Photo Sandra Goettisheim



RENEWABLE ENERGY

Collage: Pascal Ambruster



KD²Lab

Photo: Amadeus Bramstlepe



ENERGY LAB

Photo: Mark is Breig



MOBI LAB

Photo: Robert Fuge



AUTONOMOUS DRIVING

Photo: Amadeus Bramstlepe

OUR COMPANY PARTNER NETWORK

We closely cooperate with companies that actively support our degree programs. Our common goal is to provide students with opportunities to gain practical insights into various professional fields through events such as excursions and expert talks organized with our corporate partners.

PARTNERS OF DEPARTMENT



STUDY PROGRAM PARTNERS



LIVING AND WORKING IN KARLSRUHE

Karlsruhe is a young, innovative and creative city located in the heart of Europe, in the state of Baden-Wuerttemberg in southwestern Germany. With around 300,000 inhabitants Karlsruhe is the third largest city in Baden-Wuerttemberg. The city is well connected by public transport and is also very bike-friendly, with easy access to both the city and its green surroundings.

KIT offers an exciting interdisciplinary and international work environment. People from around 120 countries study and work at KIT. We promote equal opportunities for women and men and strive to increase the proportion of women in leadership positions and engineering sciences. A good work-life balance enhances well-being, job satisfaction and motivation. We help you balance your private life and work commitments, offering flexible working hours, childcare facilities, access to the KIT Sports Club and medical services.

Find out more: www.sts.kit.edu/english/Neuberufenen-Portal/4553.php



Collage: Christine Heinrich / photos: KIT

IMPRESSIONS

In addition to teaching and research, social interaction is, of course, also key to our department's work. Inaugural lectures, expert lectures, our annual department celebration, 'Dialogtag – Wirtschaft & Technologie,' and graduation ceremonies—these are just a few of the many occasions that provide opportunities to connect and exchange ideas with all members of the KIT Department of Business & Economics.



Photo: Sandra Göttisheim



Photo: Sandra Göttisheim



Photo: Laila Tkotz





**SHAPE THE FUTURE
THE KIT-WAY**

FURTHER INFORMATION

About KIT Department of Business & Economics:

<https://www.wiwi.kit.edu/english/index.php>

About Research at KIT

<https://www.kit.edu/research/index.php>

Contact

Prof. Dr. Marc Wouters

Dean of KIT Department of Business & Economics

dekan@wiwi.kit.edu

Responsible for Content

KIT Department of Business & Economics

Concept and Layout

www.christine-heinrich.design

Follow KIT Department of Business & Economics on Social Media



KITwiwi



KITwiwi



KITwiwi

Collage: Christine Heinrich / photos: KIT

